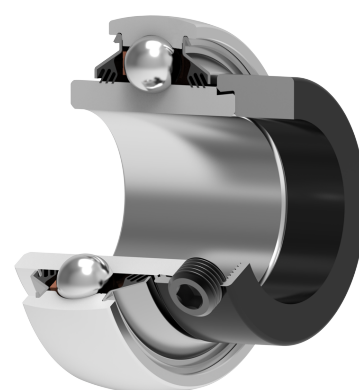
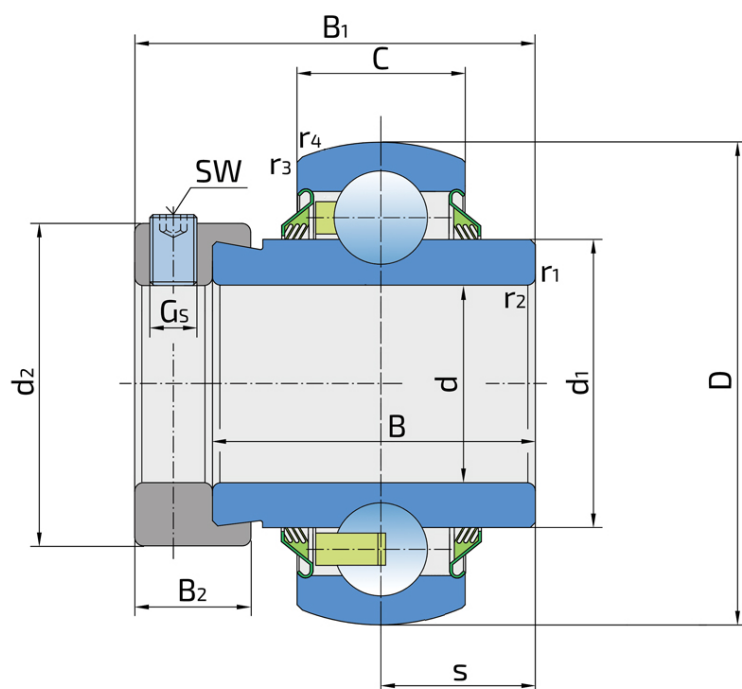


# Y-Ball Bearings With Eccentric Locking Collar

## LY 308 2T.H

Y-Ball Bearings With Eccentric Locking Collar



### Technical Specification

d	Bore diameter	40 mm
D	Outside diameter	90 mm
B	Width inner ring	43.5 mm
C	Width outer ring	27 mm
s	Distance from inner ring side face to raceway centre	19.8 mm
d1	Outer diameter inner ring	56.1 mm
Gs	Set screw	M10x1 mm
sw	Hexagonal key size for set screw	5 mm
r1,2	Inner ring Chamfer dimension	1.5 mm
r3,4	Outside ring Chamfer dimension	1.5 mm
B1	Width inner ring with locking collar	57.1 mm
d2	Bore diameter-adaptor sleeve	63.5 mm
B2	Width locking collar	18.3 mm
Cdyn	Dynamic load rating	41 kN
Co	Static load rating	24 kN
Pu	Fatigue load limit	1.01 kN
kg	Mass	1.07 kg

## Sealing

---

### T SEAL / T SEAL (2T)

3-lip seal on the both side of the bearing, provides equal protection against contamination. Recommended for application where the possibility of contamination is the same on the both side.

