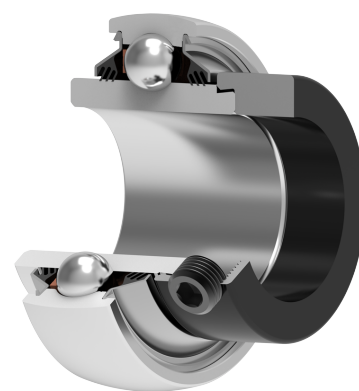
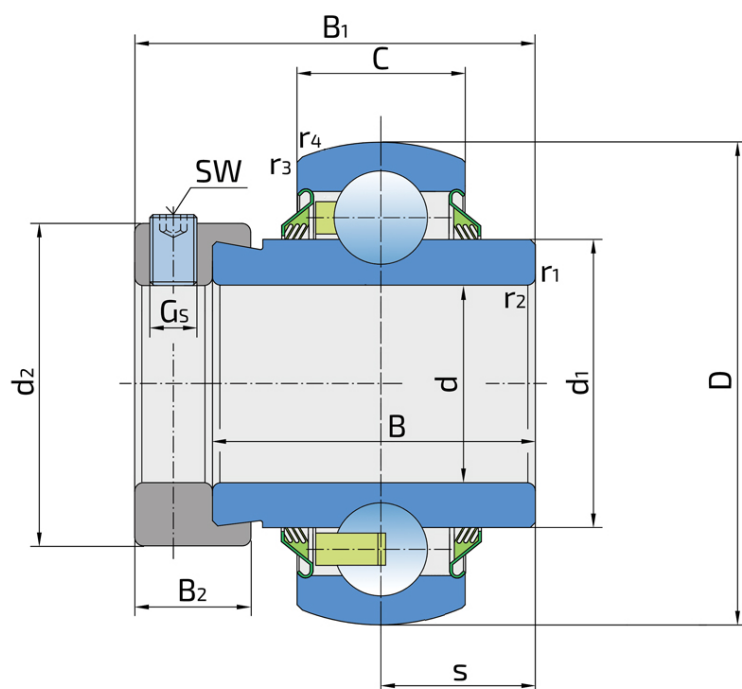


Y-Ball Bearings With Eccentric Locking Collar

LY 208 2T.H

Y-Ball Bearings With Eccentric Locking Collar



Technical Specification

| | | |
|------|--|----------|
| d | Bore diameter | 40 mm |
| D | Outside diameter | 80 mm |
| B | Width inner ring | 42.8 mm |
| C | Width outer ring | 21 mm |
| s | Distance from inner ring side face to raceway centre | 21.4 mm |
| d1 | Outer diameter inner ring | 51.8 mm |
| Gs | Set screw | M10x1 mm |
| sw | Hexagonal key size for set screw | 5 mm |
| r1,2 | Inner ring Chamfer dimension | 1 mm |
| r3,4 | Outside ring Chamfer dimension | 1.5 mm |
| B1 | Width inner ring with locking collar | 56.3 mm |
| d2 | Locking collar outside diameter | 56.5 mm |
| B2 | Width locking collar | 18.3 mm |
| Cdyn | Dynamic load rating | 30.7 kN |
| Co | Static load rating | 19 kN |
| kg | Mass | 0.67 kg |

Sealing

T SEAL / T SEAL (2T)

3-lip seal on the both side of the bearing, provides equal protection against contamination. Recommended for application where the possibility of contamination is the same on the both side.

