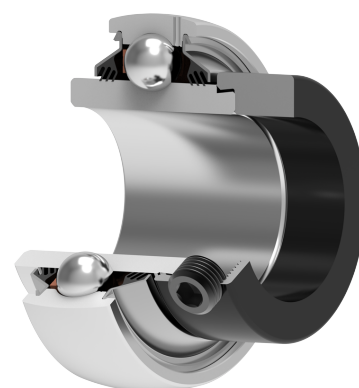
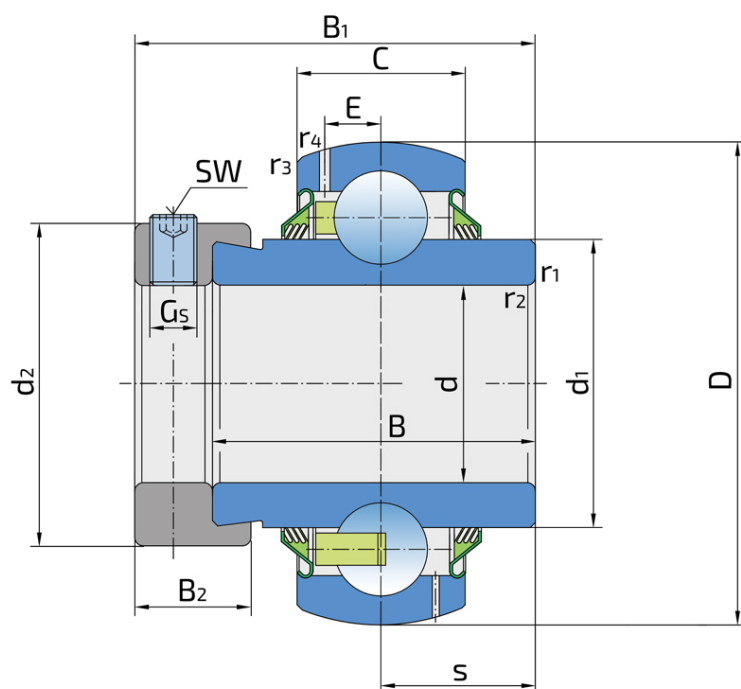


# Y-Ball Bearings With Eccentric Locking Collar

## LY 207 2T

Y-Ball Bearings With Eccentric Locking Collar



### Technical Specification

|      |  |          |
|------|--|----------|
| d    | Bore diameter  | 35 mm    |
| D    | Outside diameter   | 72 mm    |
| B    | Width inner ring   | 37.6 mm  |
| C    | Width outer ring   | 19 mm    |
| s    | Distance from inner ring side face to raceway centre     | 18.8 mm  |
| d1   | Outer diameter inner ring                                | 46.1 mm  |
| E    | Distance from raceway centre to the hole for lubrication | 5.6 mm   |
| Gs   | Set screw  | M10x1 mm |
| sw   | Hexagonal key size for set screw                         | 5 mm     |
| r1,2 | Inner ring Chamfer dimension                             | 1 mm     |
| r3,4 | Outside ring Chamfer dimension                           | 1 mm     |
| B1   | Width inner ring with locking collar                     | 51.1 mm  |
| d2   | Locking collar outside diameter                          | 51.2 mm  |
| B2   | Width locking collar                                     | 17.5 mm  |
| Cdyn | Dynamic load rating                                      | 25.5 kN  |
| Co   | Static load rating                                       | 15.3 kN  |
| Pu   | Fatigue load limit                                       | 0.66 kN  |
| kg   | Mass   | 0.57 kg  |

## Sealing

---

### T SEAL / T SEAL (2T)

3-lip seal on the both side of the bearing, provides equal protection against contamination. Recommended for application where the possibility of contamination is the same on the both side.

