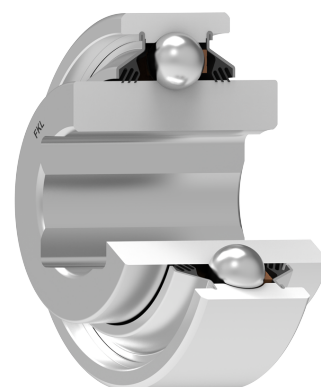
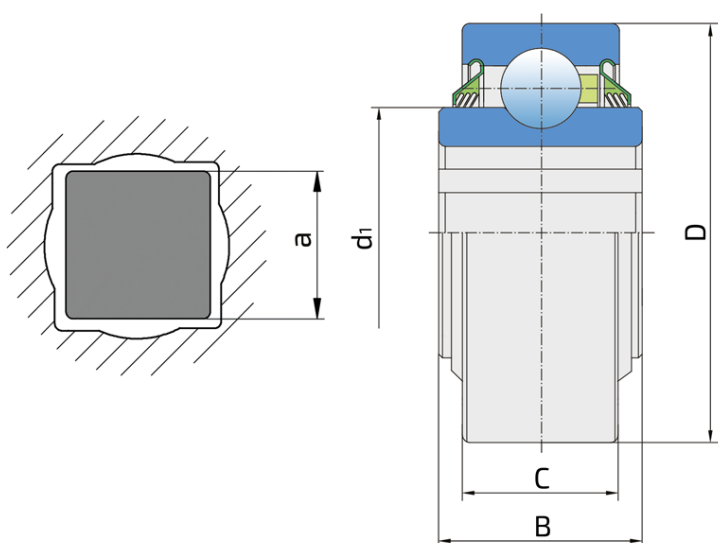


Square Bore Series With Cylindrical Outer Ring - Non-Relubricable Type

W 208PP5

Square Bore Series With Cylindrical Outer Ring - Non-Relubricable Type



Technical Specification

| | | |
|------|---------------------------|-------------|
| D | Outside diameter | 3.1496 inch |
| D | Outside diameter | 80 mm |
| B | Width inner ring | 1.437 inch |
| B | Width inner ring | 36.5 mm |
| C | Width outer ring | 0.709 inch |
| C | Width outer ring | 18 mm |
| d1 | Outer diameter inner ring | 2.047 inch |
| d1 | Outer diameter inner ring | 52 mm |
| a | Shaft size | 1 3/16 inch |
| a | Shaft size | 30 mm |
| Cdyn | Dynamic load rating | 32.5 kN |
| Co | Static load rating | 19.8 kN |
| kg | Mass | 0.68 kg |

Sealing

T SEAL / T SEAL (2T)

3-lip seal on the both side of the bearing, provides equal protection against contamination. Recommended for application where the possibility of contamination is the same on the both side.

