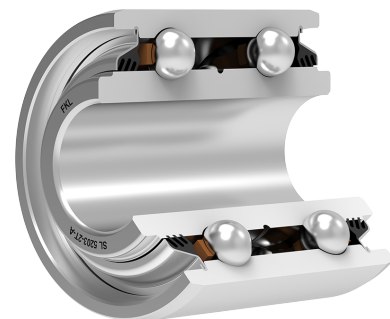
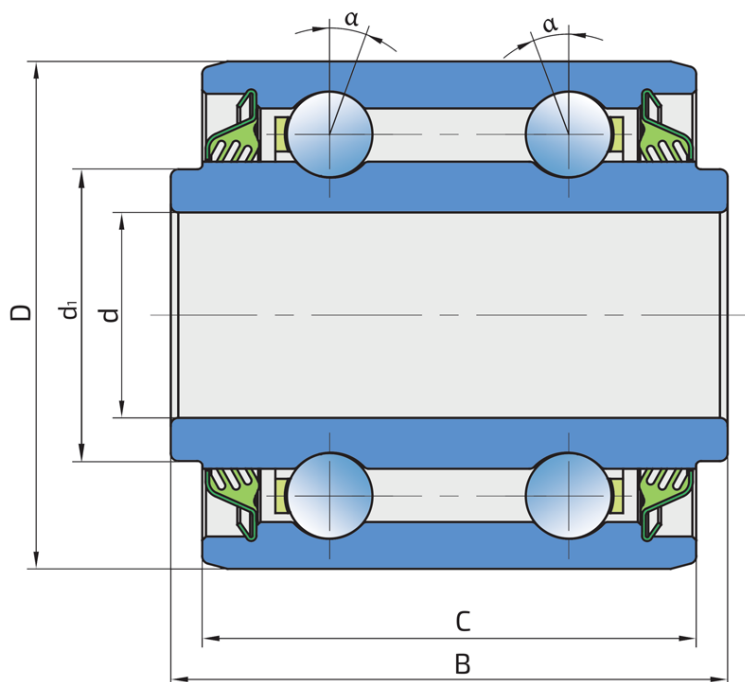


# Double Row Angular Contact Ball Bearing

## SL 5203.B-2T-A

Double Row Angular Contact Ball Bearing

Seeding Machine



### Technical Specification

d	Bore diameter	16.256 mm
d1	Inner ring outside diameter	23 mm
D	Outside diameter	40 mm
B	Width inner ring	43.88 mm
C	D-shape hole cut out dimension	38.93 mm
$\alpha$	Contact angle	20 °
kg	Mass	0.218 kg
Cdyn	Dynamic load rating	14.2 kN
Co	Static load rating	8.8 kN
Pu	Fatigue load limit	0.369 kN

## Sealing

### T SEAL / T SEAL (2T)

3-lip seal on the both side of the bearing, provides equal protection against contamination. Recommended for application where the possibility of contamination is the same on the both side.

