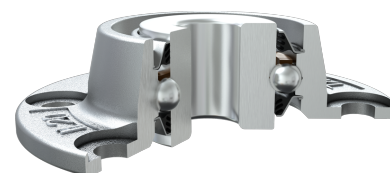
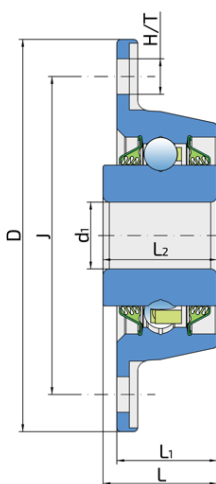
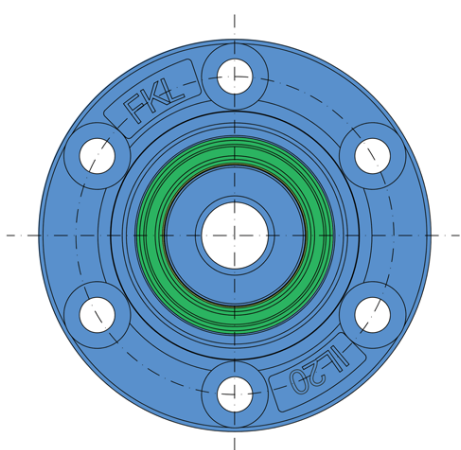


# The Bearing Solution For Seeding Machines, Integrated Flange

## IL20-76.2/6H-B16-2T

The Bearing Solution For Seeding Machines, Integrated Flange  
Seeding Machine



### Technical Specification

J	Pitch circle diameter	76.2 mm
D	Outside diameter	94 mm
H/T	Hole/Thread	6x8.5 mm
d1	Bore diameter	16 mm
L	Total length	27.3 mm
L1	Total flange length	24 mm
L2	Bearing width	27.3 mm
kg	Mass	0.52 kg
Cdyn	Dynamic load rating	22 kN
Co	Static load rating	15.2 kN
Pu	Fatigue load limit	0.638 kN

## Sealing

### T SEAL / T SEAL (2T)

3-lip seal on the both side of the bearing, provides equal protection against contamination. Recommended for application where the possibility of contamination is the same on the both side.

