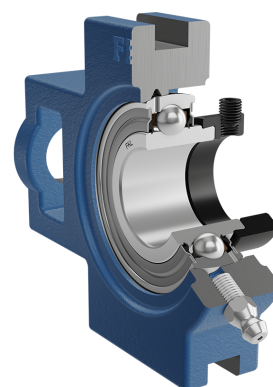
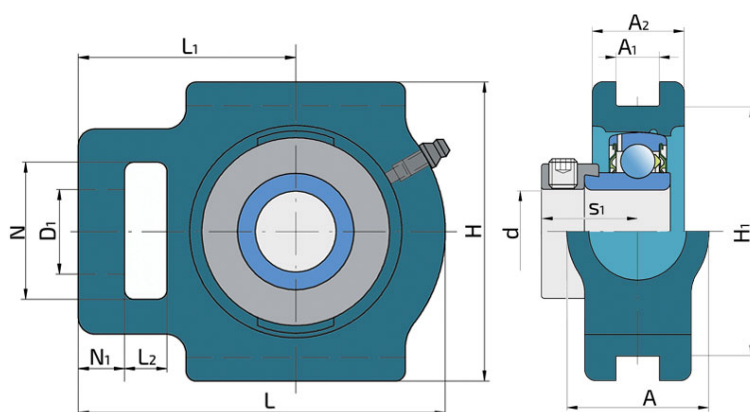
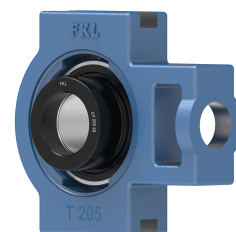


Y-Bearing Take - Up Units With Grey Cast Iron Housings "T"

UYT 211 2S

Y-Bearing Take - Up Units With Grey Cast Iron Housings "T"



Technical Specification

d	Bore diameter	55 mm
D1	Hole diameter	35 mm
L	Overall length	171 mm
L1	Distance from the contact surface of housing to the bearing axis	106 mm
L2	Length of attachment slot	25 mm
A	Overall width	64 mm
A1	Width of location slot	27 mm
A2	Housing flange thickness	41 mm
H	Housing height	146 mm
H1	Distance between bottoms of location slot	130 mm
N	Height of attachment slot	64 mm
N1	Length attachment end	19 mm
s1	Distance from locking device side face to raceway centre	35.9 mm
kg	Mass	3.99 kg
Cdyn	Dynamic load rating	43.6 kN
Co	Static load rating	29 kN
Pu	Fatigue load limit	1.25 kN

Sealing

S SEAL / S SEAL (2S)

Single lip seal with the labyrinth between the sheet part and the rubber lip which conducts the contact sealing. The friction and speeds are the same as with RS but provides much better protection against the rough impurity particles. This is very good sealing system: the sheet part protects the seal from the soil, dust and rough particles. At the same time makes the labyrinth with the rubber part. The rubber part provides contact sealing which prevents penetration of finer impurities, water, moisture, steam etc. Suitable for neutral conditions because of the presence of the foreign materials. It is used with the Y bearing (standard) and deep groove ball bearings.

